



# MONTHLY MEMBERSHIP PROGRESS REPORT

District 23 A

Results as of: 09/30/2017

GMT: MAHESH CHITNIS

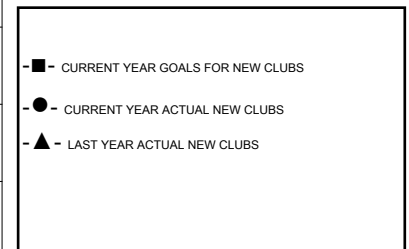
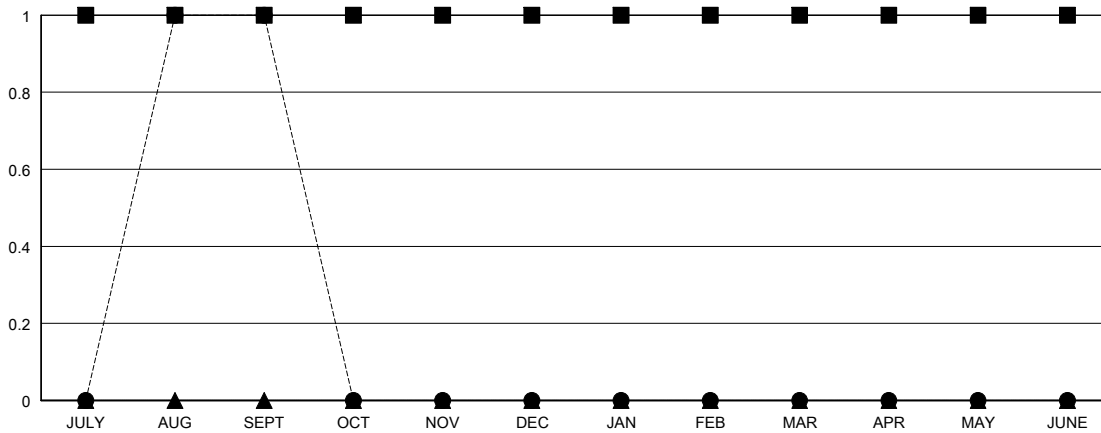
LOCATION CONNECTICUT

GMT CA

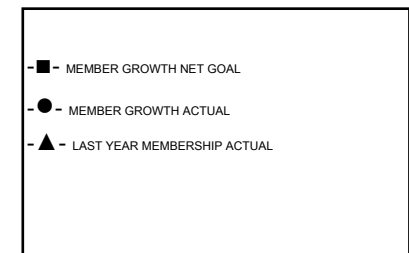
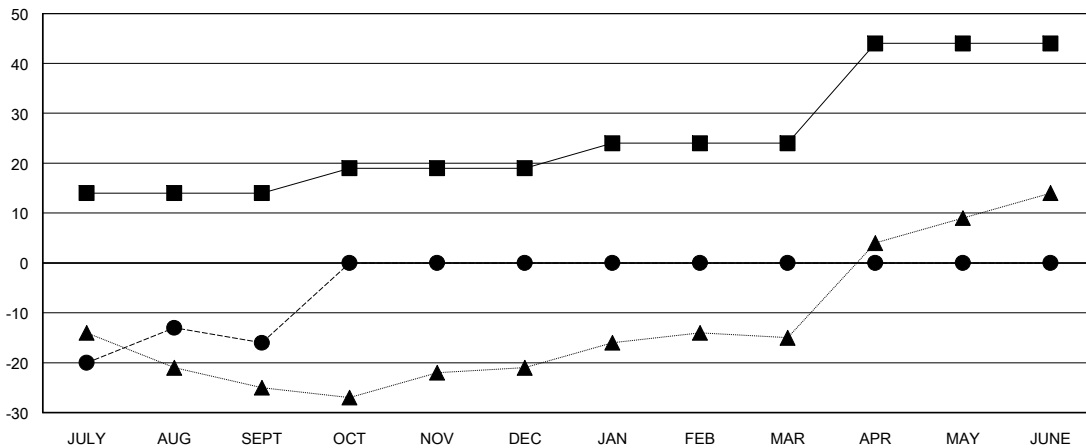
| Clubs                 |               |           |               |
|-----------------------|---------------|-----------|---------------|
| RESULTS FOR 2017-2018 |               |           |               |
| QUARTER               | NEW CLUB GOAL | NEW CLUBS | DROPPED CLUBS |
| JULY/AUG/SEPT         | 1             | 1         | 0             |
| OCT/NOV/DEC           | 0             | 0         | 0             |
| JAN/FEB/MAR           | 0             | 0         | 0             |
| APR/MAY/JUNE          | 0             | 0         | 0             |

| Members               |                        |                      |  |
|-----------------------|------------------------|----------------------|--|
| RESULTS FOR 2017-2018 |                        |                      |  |
| QUARTER               | MEMBER GROWTH NET GOAL | MEMBER GROWTH ACTUAL | DROPPED MEMBERS ACTUAL (including transfers) |
| JULY/AUG/SEPT         | 14                     | 47                   | 63   |
| OCT/NOV/DEC           | 5                      | 0                    | 0  |
| JAN/FEB/MAR           | 5                      | 0                    | 0  |
| APR/MAY/JUNE          | 20                     | 0                    | 0  |

GOALS AND ACTUAL NEW CLUBS CUMULATIVE



GOALS AND ACTUAL MEMBERS CUMULATIVE



|                        |   |  |
|------------------------|---|--|
| DROPPED CLUBS: 0       | 9 CLUBS OF 49 ADDED 1 OR MORE NEW MEMBERS                 | <b>GENDER DISTRIBUTION</b><br>MALE 969 (68.87%)<br>FEMALE 438 (31.13%)<br>Women Percentage Fiscal Year Goal: 33% |
| <b>DROPPED MEMBERS</b> | <a href="#">CLICK HERE FOR CUMULATIVE MEMBERSHIP DATA</a> | TOTAL FAMILY UNIT MEMBERS 165  |
| DECEASED 8             |   | FAMILY MEMBERS PAYING HALF DUES 84   |
| CLUB CANCELLED 0       |   |  |
| OTHER 55               |   |  |
| TOTAL 63               |   |  |